

# Investigate Forests Forests & Products



Learning about Forests Ireland

Green-Schools Biodiversity



An Roinn Talmhaíochta,  
Bia agus Mara  
Department of Agriculture,  
Food and the Marine

These things are made of **wood**.



















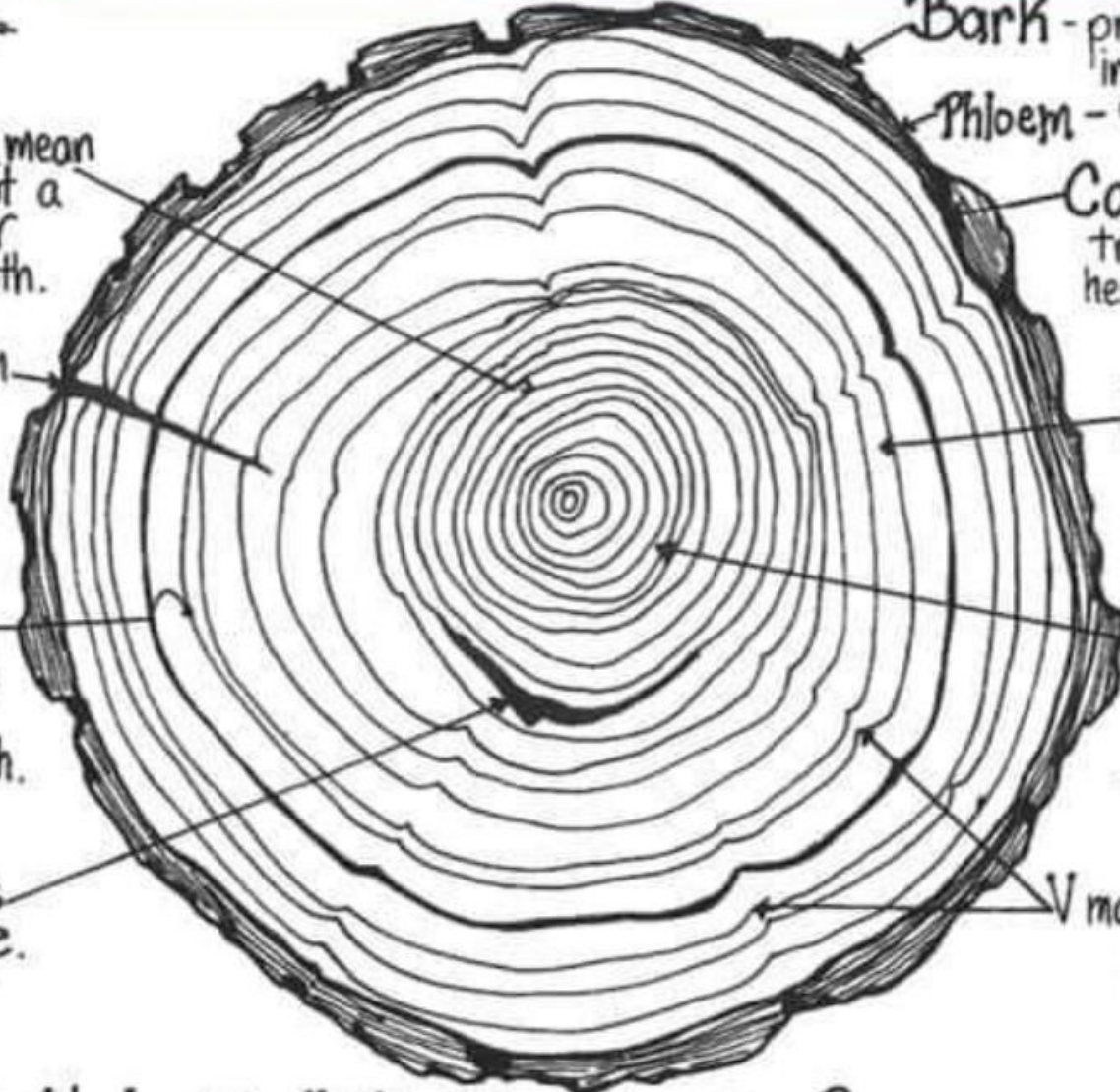




# Ring's Characteristics

## Tree Rings

What stories can they tell us?



Thin rings mean there was not a lot of light or water for growth.

Cracks form as the slice dries.

Thick rings mean there was light and water for much growth.

Scar shows fire damage.

Bark - protects the inside of the tree.

Phloem - carries food from leaves.

Cambium - the tree grows from here.

Xylem

Sapwood - carries minerals and water in sap.

Heartwood - dead, hard, center of tree, supports tree.

V markings - branch grew here.

How old do you think this tree was? \_\_\_\_\_